

VOLVO

Henrik Willford

Försörjningskedjor: Vikten av standards för elektroniska meddelanden



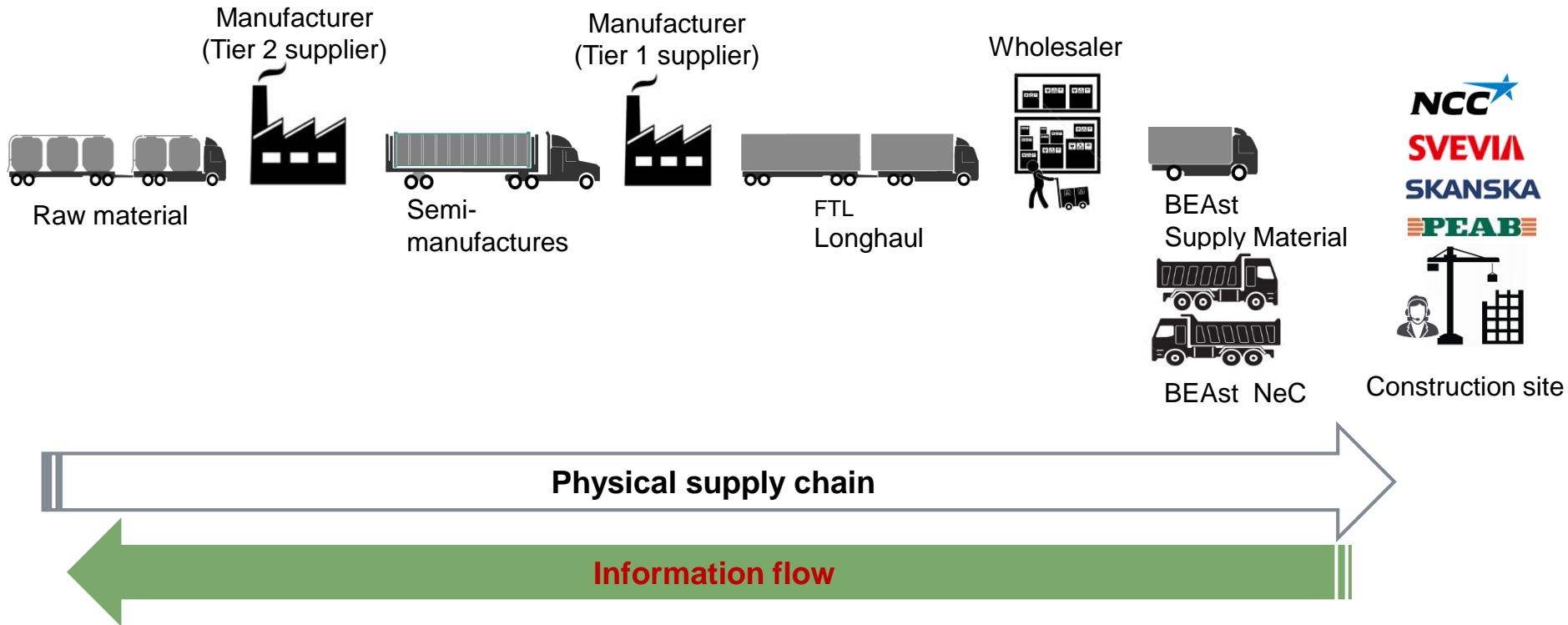
Daily commodities
Consumer goods



Forest & Paper



Industrial (automotive)



Informationsplattform för försörjningskedjor

A. Informationskällor

1. Förare
2. Motor
3. Chassi
4. Påbyggnad
5. Släp



B. Förarvisning

1. Instrumentkluster
2. Driver Information Display (DID)
3. Secondary Information Display (SID)
4. Mobile Display



C. Administrationsvisning

1. Åkeri
2. Speditör (3PL)
3. Godsavsändare
4. Godsmottagare



Informationsutbyte:

- *Rutter med lastning- och lossningsplatser*

Uppdragsbeskrivning



Uppdragsutvärdering

- *Larm och varningar*
- *Lokalisering och spårning på karta*
- *Rapport och analys*



Available API methods

General API

- LoginService
- NotificationService
- VehicleAndDriverAdminService

Driver Times related (Driver Times)

- DTMService
- ReportService



Positioning related (Positioning)

- TrackingService
- POIService



Vehicle related (Fuel & Environment)

- ReportService
- MessageService (Alarms)

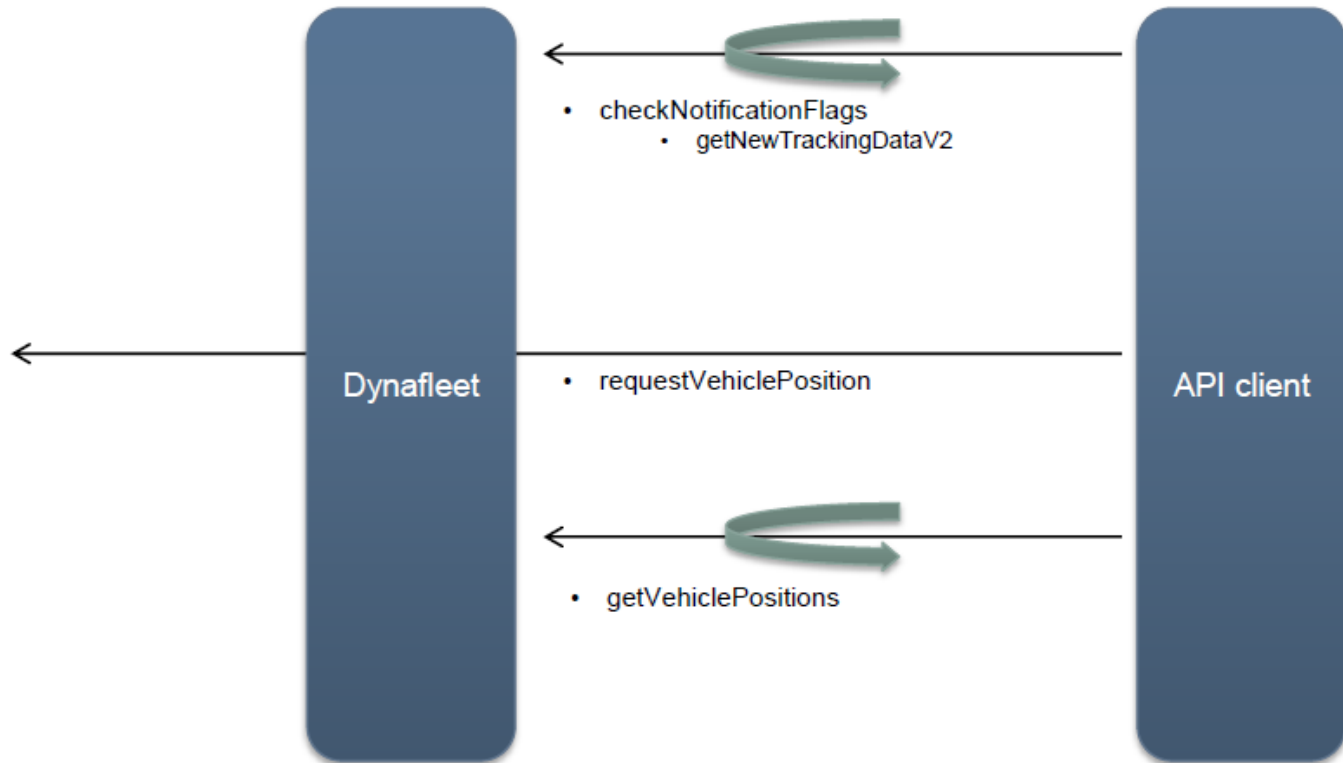


Messaging related (Messaging)

- MessageService (Text)
- FormService
- FormMessageService
- OrderService
- TransportCustomerService

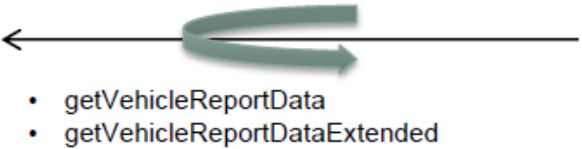
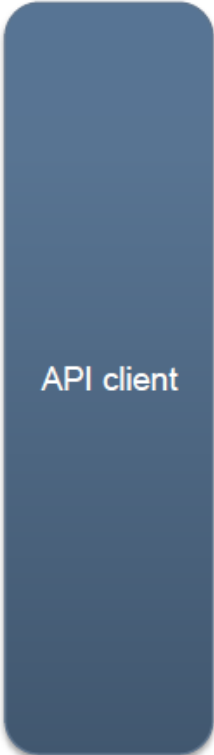
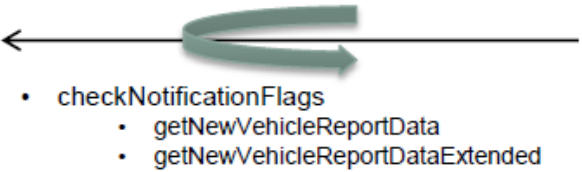
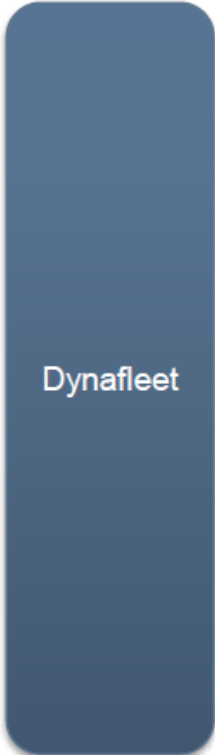


Positioning related TrackingService



Vehicle related

ReportService



Fleet Management Standard (FMS) 3.0

Generalla parametrar

1.1	Parameters for Bus and Truck FMS-Standard.....	7
1.1.1	Fuel Consumption: LFC	7
1.1.2	Dash Display: DD	8
1.1.3	Electronic Engine Controller #1: EEC1	9
1.1.4	Engine Hours, Revolutions: HOURS	10
1.1.5	Vehicle Identification: VI	11
1.1.6	FMS-standard Interface Identity / Capabilities: FMS	12
1.1.7	High Resolution Vehicle Distance: VDHR	14
1.1.8	Tachograph : TCO1	15
1.1.9	Engine Temperature 1: ET1	17
1.1.10	Ambient Conditions: AMB	18
1.1.11	Driver's Identification: DI	19
1.1.12	Fuel Economy: LFE	20
1.1.13	Air Supply Pressure : AIR1	21
1.1.14	High Resolution Fuel Consumption (Liquid): HRLFC	22
1.1.15	Aftertreatment 1 Diesel Exhaust Fluid Tank 1 Information: AT1T1I	23
1.1.16	FMS Tell Tale Status: FMS1	24
1.2	Parameters for Truck FMS-Standard.....	27
1.2.1	Cruise Control/Vehicle Speed: CCVS	27
1.2.2	Electronic Engine Controller #2: EEC2	29
1.2.3	Vehicle Weight: VW	30
1.2.4	Service Information: SERV	32
1.2.5	PTO Drive Engagement: PTODE	33
1.2.6	Combination Vehicle Weight: CVW	34
1.2.7	Electronic Retarder Controller 1: ERC1	35

Fleet Management Standard (FMS) 3.0

Tell-tale parametrar

Telltale ID	ISO No.	Name
1	27	Cooling air conditioning
2	82	High beam, main beam
3	83	Low beam, dipped beam
4	84	Turn signals
5	85	Hazard warning
6	100	Provision for the disabled or handicapped persons
7	238	Parking Brake
8	239	Brake failure/brake system malfunction
9	242	Hatch open
10	245	Fuel level
11	246	Engine coolant temperature
12	247	Battery charging condition
13	248	Engine oil
14	456	Position lights, side lights
15	633	Front fog light
16	634	Rear fog light
17	637	Park Heating
18	640	Engine / Mil indicator
19	717	Service, call for maintenance
20	1168	Transmission fluid temperature
21	1396	Transmission failure/malfunction
22	1407	Anti-lock brake system failure
23	1408	Worn brake linings
24	1422	Windscreen washer fluid/windshield washer fluid
25	1434	Tire failure/malfunction
26	1603	Malfunction/general failure
27	2426	Engine oil temperature
28	2427	Engine oil level
29	2429	Engine coolant level
30	2440	Steering fluid level

Telltale ID	ISO No.	Name
31	2441	Steering failure
32	2461	Height Control (Levelling)
33	2574	Retarder
34	2596	Engine Emission system failure (Mil indicator)
35	2630	ESC indication
36	no	Brake lights
37	no	Articulation
38	no	Stop Request
39	no	Pram request
40	no	Bus stop brake
41	2946	AdBlue level
42	no	Raising
43	no	Lowering
44	no	Kneeling
45	no	Engine compartment temperature
46	no	Auxillary air pressure
47	2432	Air filter clogged
48	2452	Fuel filter differential pressure
49	249	Seat belt
50	no	EBS
51	2682	Lane departure indication
52	no	Advanced emergency braking system
53	2681	ACC
54	no	Trailer connected
55	2444/2445	ABS Trailer 1,2
56	2108	Airbag
57	no	EBS Trailer 1,2
58	no	Tachograph indication
59	2649	ESC switched off
60	no	Lane departure warning switched off